

W. G. A.



OREGON STATE UNIVERSITY  
**EXTENSION SERVICE**

EDUCATION THAT WORKS FOR YOU

4-H is the youth development program Service. The 4-H Youth Development Program helps young people become self-directing, productive members of society by providing hands-on learning experiences and more than 40 projects and activities.

## Forestry

Extension's forestry program addresses the needs of forest resources and options for sustainable economic and environmental benefits. Programs are provided for forest owners, managers, wood products manufacturers, forestry professionals, youth, and the general public.

## Energy

Extension Energy programs help individuals and businesses improve health and safety, increase environmental impact, and increase productivity. Programs are supported primarily through grants and contracts.

## Family & Community Dev

Extension's family and community development program offers educational opportunities for Oregonians to meet the practical challenges of life. Programs address critical issues that affect individuals and families to become healthy, financially responsible, caring members of society.

## Extension Sea Grant

Extension's Sea Grant program provides marine education, training, and technical assistance. Areas of major effort are fisheries, seafood and technology, community development and resource management and conservation education (including the Public Writing Center Marine Science Center). The primary program is from the Oregon Sea Grant Program.

## Agriculture

Extension's agricultural program provides leadership development, education, training, and assistance to people with agricultural interests. Emphasis is on development and application of technology that promotes and preserves environmental quality. Programs include food and fiber production, natural resource management, farm business management, value-added processing, and community horticulture.

### Extension is:

Research Backed – Educational programs based on unbiased University research findings.

Community Based – OSU faculty living and working in each Oregon county.

Informally Delivered – Learning and skill building through meetings, workshops, short courses, tours, demonstrations, publications, videos, newsletters, the Web, and news media activities.

Widely Used – More than 2 million face-to-face contacts with Oregonians each year.

Volunteer Oriented – Some 30,000 trained volunteers extend programs for business, families, and youth.

Broadly Supported – Funding from state government (60%), Federal government (20%), counties (17%), and from sales and service fees (3%).

**OREGON STATE UNIVERSITY**

OPEN MINDS. OPEN DOORS.



OREGON  
STATE  
UNIVERSITY

950 West 13 Avenue  
Eugene, Oregon  
97402-3913

Agricultural,  
Forestry, Home Economics,  
Horticulture, 4-H  
Telephone  
541-682-4243  
1-800-872-8980

Nutrition  
Telephone  
541-682-4281

Fax  
541-682-2377

Date: August 26, 2003  
To: Lane County Board of Commissioners  
From: Louie R. "Bo" Freeman  
Extension Faculty, Staff Chair  
Re: OSU Extension Service Updates

**Program Updates:**

▪ **STATE BUDGET REDUCTIONS**

▪ **EXTENSION PUBLIC OUTREACH**

- Four display booths at Lane County Fair with the theme of Thriving Through Hard Times with OSU/Lane County Extension: Extension booth, Master Gardeners booth and Master Composters booth reaching approximately 8,000 persons, and the Master Food Preservers reached 5,695 persons through their booth and at the various demonstrations. We also participated in the Water Testing Booth provided by OSU.

▪ **EXTENSION STAFFING**

- FCD/NEP Professional Faculty position has been filled by Anna Galas as of August 25<sup>th</sup>.  
- Pete Schreder will no longer be our Livestock Faculty, Shellby Filley housed in Roseburg will cover a 6 county area.  
- Roxann Emmons is still full time 4-H instructor.

▪ **FAMILY AND COMMUNITY DEVELOPMENT**

**Family and Community Development (FCD)**

- "All About Food"- Susan Busler and Nellie Oehler presenting. Community Action Planning for FOOD for Lane County, Veneta. 19 participants.  
- Lane County Extension Homemakers Achievement Day, Irving Grange. 82 participants.  
- Lane County Extension Homemakers Alumna Luncheon. 28 participants.  
- Lane County Extension Homemakers training session- "All About Tea and More." 11 participants.  
- Lane County Extension Homemakers planning sessions- 2, 11 and 18 participants.



OREGON  
STATE  
UNIVERSITY

950 West 13 Avenue  
Eugene, Oregon  
97402-3913

Agricultural,  
Forestry, Home Economics,  
Horticulture, 4-H  
Telephone  
541-682-4243  
1-800-872-8980

Nutrition  
Telephone  
541-682-4281

Fax  
541-682-2377

### **Leadership Education Program**

- Since there is no longer a state supported LEP program, participant meetings are being held to focus on the future of LEP in Lane County.
- LEP volunteers presented a three-hour "Volunteer Management" training for volunteers at the Village Charter School. 9 participants.
- Extension staff and volunteers presented a program for the staff at the Far Horizons Montessori School on "Handling Difficult Conversations."
- Second Chance "All About Me" class. 18 participants.

### **Family Food Education Volunteers (formerly Master Food Preservers):**

- Coordinating the statewide food safety/preservation hotline. (80-90 calls/daily). The hotline opened June 16<sup>th</sup>, and runs through October.
- Finished nine weeks of training for the Family Food Education Volunteer program. Fifteen volunteers passed the certification exam. Five of the graduates were from the Healthy Futures Class taught by the Nutrition Education Program staff. Nine of the trainees are actively involved in the gleaner program in Lane County.
- Lane County currently has 36 certified MMP/FFE participants.
- The FFE volunteers have been involved in a number of activities including: powdered milk demonstrations in Springfield, teaching food dehydration to the Healthy Futures class and the Salvation Army Women's Society (26 participants), taught water bath canning at Down to Earth (15 participants), and had a information table at Lone Pine Farms demonstrating different things that can be done with strawberries (380 contacts- two day event).
- Food Faire workshop in July. Nine stations with hands-on activities to teach safe ways to preserve food. 65 participants.
- Canning Tomatoes and Salsa- Willamalane Senior Center, August 28<sup>th</sup>.

#### ▪ **FORESTRY**

- Master Woodland Manager Training, Friday's, January 10- August 29, 2003. 17 participants. June training was "Harvesting & Roads."
- Participated in two conferences: "Women in Oregon Timber" and the "Oregon Logging Conference." 150 participants.
- Forest Field Day presentation at Crow-Applegate Middle School. 34 participants.

#### ▪ **HORTICULTURE**

- Touring orchards to inspect for Eastern Filbert Blight, August 20 & 21<sup>st</sup>. 90 participants.
- Lingonberry Research (\$ 20,000 Grant)

### **Master Composters**

- Free compost workshops in conjunction with the City of Eugene. September, October and November.



OREGON  
STATE  
UNIVERSITY

950 West 13 Avenue  
Eugene, Oregon  
97402-3913

Agricultural,  
Forestry, Home Economics,  
Horticulture, 4-H  
Telephone  
541-682-4243  
1-800-872-8980

Nutrition  
Telephone  
541-682-4281

Fax  
541-682-2377

▪ **NUTRITION EDUCATION PROGRAM**

(Adult and Youth Limited Resource)

**Oregon Family Nutrition Program (OFNP)**

- Reached 336 participants in Eugene area with programs for WIC Farmer's Market, HIV Alliance, Green Leaf Village and Second Chance.
- Reached 17 participants in Springfield for Willamalane Adult Activity Center.
- Reached 12 participants in Florence for the Food Stamp Office and Peace Health.
- Reached 6 participants in Reedsport for WIC.
- Reached 24 participants for DHS.
- Reached 10 participants in Veneta for Veneta Park.
- Reached 25 participants In-home.

**Expanded Food & Nutrition Education Program (EFNEP)**

- Reached 290 participants in Eugene area with programs for WIC, Willamette Valley Treatment, Willamette Family Treatment, WIC Farmer's Market, Westmoreland Boys & Girls Club, Bethel Boys & Girls Club, Creative Care, SAFE Center, Maple Wood Meadows, Pathways/Looking Glass, Park at Emerald Village, Greenleaf Village, and Juvenile Justice Center.
- Reached 676 participants in Springfield for WIC, Brethren Housing, Willamalane Children's Celebration, Gateways Learning Center, Brattain House, SCAR/Jasper Mtn.
- Reached 40 participants in Florence for Florence Food Share and WIC.
- Reached 19 participants in Cottage Grove for WIC.
- Reached 16 participants in Oakridge for WIC and Oakridge Family Resource Center.
- Reached 9 participants in Veneta for FFLC Lunch Program.
- Reached 63 participants In-home.

▪ **YOUTH DEVELOPMENT**

- Lane County 4-H Camp in June. 120 youth and adult participants.
- 4-H Youth Fair in July. 600 youth participants with over 4,000 exhibits.
- Over 40 4-H participants in horse projects to participate in the State Fair.
- Reorganization of Lane County 4-H program in October.
- Summer Conference, July, 10 attended.
- Oregon State Fair, Over 150 entrees were at State Fair.
- The 4-H'ers will need to pay a service fee of \$10.00 per 4-H member and \$20 per family in the traditional 4-H club program.

▪ **UPCOMING PROGRAMS/EVENTS**

- **MASTER FOOD PRESERVERS**  
Continuing the statewide food safety hotline through October.  
Tuna Workshop, September 10<sup>th</sup>.  
Holiday Breads Workshop, December 2<sup>nd</sup>.

- **FAMILY AND COMMUNITY DEVELOPMENT**  
Women: Secure Your Financial Future, October 2, 9, 16, 23.



OREGON  
STATE  
UNIVERSITY

950 West 13 Avenue  
Eugene, Oregon  
97402-3913

Agricultural,  
Forestry, Home Economics,  
Horticulture, 4-H  
Telephone  
541-682-4243  
1-800-872-8980

Nutrition  
Telephone  
541-682-4281

Fax  
541-682-2377

Women: Secure Your Financial Future, October 7, 14, 21, 28.  
Women: Secure Your Financial Future, October 8, 15, 22, 29.  
Healthy Air for Your Home, October 16<sup>th</sup>.  
Preserving Old Photos, December 18<sup>th</sup>.

- FORESTRY

GPS Fundamentals, September 23<sup>rd</sup>.

- HORTICULTURE

What Can I Do with My Small Farm, October 14<sup>th</sup>.

Hypertufa Workshop, October 23<sup>rd</sup>.

Gifts From the Garden, November, to be announced.

Core Pesticide Short Course, December 4<sup>th</sup>.

-MASTER GARDENER'S PROGRAM

Application deadline, September 26<sup>th</sup>. Classes begin January 7, 2004.

-YOUTH DEVELOPMENT

UofO Football game parking by 4-H'ers, September, October and November.

Fall Fun Horse Day, September.

New 4-H Leader training starts in October through November.

4-H New Year Kickoff, October 13<sup>th</sup>.

LRF/lh

Page 4 of 4



# GPS Fundamentals

**Where:** OSU/Lane County Extension Service Auditorium  
950 West 13th Avenue, Eugene (next to the Fairgrounds)

**When:** Tuesday, September, 23, 2003, 9 a.m. - 4 p.m.

**Speaker:** Michael Wing, Assistant Professor, Forest Engineering Department, OSU College of Forestry

**Cost:** To offset some of the expenses incurred in offering this workshop a \$20 registration fee will be required of the participants. Pre-registration is required. Make checks payable to:  
OSU/Lane County Extension Service  
950 West 13th Avenue, Eugene, OR 97402.



**Who should attend:** Anyone interested in learning more about Global Positioning Systems (GPS) and forestry applications.

This session will be taught by Dr. Michael Wing, assistant professor in the Forest Engineering Department at Oregon State University. Dr. Wing is a registered professional land surveyor and water rights examiner in Oregon, with over 10 years experience in applying spatial tools for natural resource research, and has provided consultation and services for a variety of federal, state and private organizations.

Join Michael as he discusses:

- Introduction to GPS principles
- Potential applications
- GPS equipment overview
- Information sources
- Plans calling for a field application to observe the functions of a GPS system.

We will endeavor to provide public accessibility to services, programs, and activities for people with disabilities. If accommodation is needed to participate at any meeting, please contact the ADA Coordinator at the Lane County office of OSU Extension Service at 682-4243 or 1-800-872-8980 at least two-weeks prior to the scheduled meeting time.

Oregon State University Extension Service offers educational programs, activities, and materials—*without discrimination based on race, color, religion, sex, sexual orientation, national origin, age, marital status*—as required by Title VI of the Civil Rights Act of 1964, Title IX of the Education Amendments of 1972, and Section 504 of the Rehabilitation Act of 1973. Oregon State University Extension Service is an Equal Opportunity Employer.





september  
10th

Free

10 a.m.  
to  
Noon

OSU/Lane County Extension Auditorium

Learn how to:

- Buy;
- Fillet;
- Can;
- Smoke; and
- Pickle fish

Workshop  
participants can  
also try their  
hands at actually  
filleting and  
canning the fish

For more information call the  
OSU/Lane County Extension  
Food Safety/Preservation Hotline  
at 682-4246 or 800-354-7319



# Workshop!

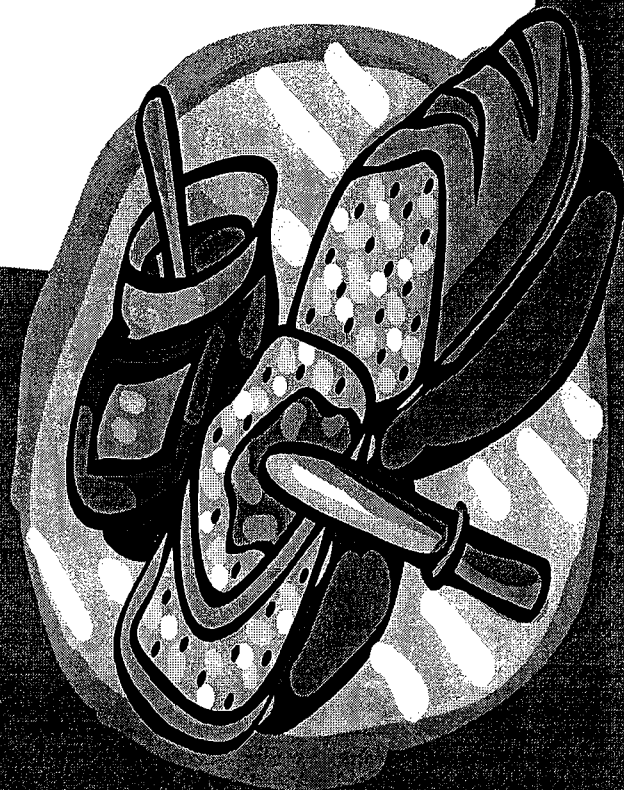
## Holiday Breads Workshop

December 2nd, 2003

10 a.m.—Noon or 6:30 p.m.—8:30 p.m.

Basic bread-making with a holiday flair! Learn to make everything from tea rings to pizza dough.

Cost for the workshop is  
\$5.00



Workshop will be held at  
the OSU/Lane County  
Extension Service  
Auditorium, 950 W 13th  
Ave Eugene, OR 97402

---

## Best Kept Secrets ~ Little Known Facts

### OSU/Lane County Extension Service

#### **History:**

- The Lane County office opened in 1911
- 4-H started in 1902 prior to the Extension Service
- 4-H is joined with the Extension Service in 1912
- Assisted with the start-up of the Farmer's co-op in 1925
- 4-H is an Extension Program (Head, Heart, Health, Hands)

.....

#### **Now:**

- Extension "Agents" are Oregon State University (OSU) Faculty
- 4-H is one of the largest youth organizations in the USA
- 4-H has developed groups internationally
- 2,500 publications are available for the public
- 20,000 consumer questions are answered each year
- Video library available free to the public
- Pressure canner gauge testing free for the public
- Classes are available throughout the year at little or no cost, i.e.
  - Food preservation
  - Gardening
  - Composting
  - Pruning
  - Parenting/nutrition
  - Forestry
  - Small Woodland Owner
  - Watershed Stewardship
  - Livestock
  - Family Community Leadership
  - Volunteer Management
- Nutrition education is available for families with limited resources
- Volunteer leadership program held yearly
  - Older youth leadership opportunities
  - Adult facilitator training
- Food preservation/safety hotline available June-October
- Gardening hotline available year-round

- Research-based information provided upon request
- Instrumental in starting blueberry & lingonberry production in Oregon
- Specialists at OSU provide research to Extension offices
- Local programs are developed through a citizens advisory committee
- Funded by state, federal and county funds and local donations
- Teach gardening “Smarter not Harder” with the Adaptive Garden site
- Programs are adapted to diverse and changing community
- Programs available for all ages
- School enrichment programs
  - Water quality
  - Hatch Japanese Quail eggs
  - Nutrition
- Summer camp available to elementary age youth
- Hispanic programs and brochures available
- Front Door to Oregon State University
- Extension is a nationwide outreach program from Land Grant universities
- We are here to serve you and your family!

G:\Hm So - Lane Co Fair\Best kept Secret.doc

We will endeavor to provide public accessibility to services, programs, and activities for people with disabilities. If accommodation is needed to participate at any meeting, please contact the ADA Coordinator at the Lane County office of OSU Extension Service at 682-4243 or 1-800-872-8980 at least 48 hours prior to the scheduled meeting time.

Oregon State University Extension Service offers educational programs, activities, and materials—*without discrimination based on race, color, religion, sex, sexual orientation, national origin, age, marital status*—as required by Title VI of the Civil Rights Act of 1964, Title IX of the Education Amendments of 1972, and Section 504 of the Rehabilitation Act of 1973. Oregon State University Extension Service is an Equal Opportunity Employer.

## **Thriving Through Hard Times With OSU Extension**

The OSU Extension Service is 90 plus years old and, since it's beginning, has had a mission to help Oregonians have a better life. As we continue into hard times, OSU/Lane County Extension Service has some tips to help you stretch your \$ or make your life a little easier. We hope you will enjoy these tips from our staff and come to visit us for more helpful information.

### **For the Garden**

- ❖ Use those old Venetian blinds; cut them up to make plant stakes or plant markers.
- ❖ Old cotton or wool carpet can be cut into strips to make weed proof mulching for your garden or a soft walkway between rows.
- ❖ Cut up those old panty hose and make soft ties to hold plants to stakes and the foot part can hold a bar of soap that you can hang next to your faucet for a quick hand wash.
- ❖ Don't forget the dandelions, they don't have to be just a weed with a pretty yellow flower, how about picking the young leaves for dinner or the flowers to make wine.
- ❖ Egg cartons make excellent containers for plant starters. Punch a whole in the bottom for drainage and place the carton on a waterproof tray. Fill with planting soil and grow your own starts.

### **Around the Kitchen**

- ❖ Put that left over coffee or tea in ice cube trays. They are great to make a cool cup of iced coffee or tea or just to cool off that hot cup and not dilute your drink.
- ❖ Put those carrot peels, onion skins, celery leaves in a sack in the vegetable crisper of the refrigerator. Then add them to the bones from a chicken, turkey or soup to make inexpensive stock. If you prefer you can just cook the vegetables for a vegetable stock.
- ❖ Use those unused shower caps from motel visits to cover your food in the refrigerator or on the picnic table.
- ❖ Make up a triple batch of your favorite homemade cookie dough and freeze the dough in inch thick layers. When frozen cut into inch cubes and bake. They will turn out just like the refrigerator/freezer cookies, but at a fraction of the price. This way you can bake cookies when you need them and always have fresh ones on hand with little work.
- ❖ Drain the liquid from canned fish and pour it on the dog or cat food. It will be a treat for your pet and also good for them.
- ❖ Reuse prescription bottles to put condiments in for your home packed lunch. It works great for salad dressing, powdered drink mixes, etc.
- ❖ Use old clean panty hose to dry herbs in. You also can use them to hang nuts, onions and garlic out to dry.

### **Around the House**

- ❖ Fill egg cartons with dryer lint, pour melted wax from used candles over the lint and you will have a foolproof fire starter or it can be used to light charcoal briquettes in the barbecue.
- ❖ Duct tape old phone books together to make a booster seat for a child OR a step stool for little ones to reach the sink or toilet.
- ❖ Turn your flavored creamer containers into a child bowling pin set or fill with different kinds of grains like rice, beans, pasta to make musical instruments.

### **Make Your Own to Save \$**

- ❖ How much do you spend on lattes or other coffee drinks. To make your own, heat a cup of milk in the microwave or on top of the stove. Add a tablespoon of instant coffee, a squirt of flavoring. Blend for a few seconds to get some foam and save dollars on your food bill.
- ❖ Make your own baby wipes for your child or just to have on hand for a quick clean ups. All you need is a plastic container with a lid, a heavy-duty roll of paper towels, 2 tablespoons baby shampoo or baby wash, 2 tablespoons baby oil and 2 cups of water. Mix all the ingredients together and put in the plastic container. Cut the roll of paper towels in half with a sharp knife and place on top of the liquid ingredients. Put on the lid and let sit for 10 minutes. Turn over the can and let set 5 more minutes. Open the container and pull out the cardboard ring in the middle and the first wipe. Now you have a hundred or more wipes for just pennies.
- ❖ Make your own instant oatmeal packets for that quick and easy breakfast.  
3 cups quick cooking oats (blend 1 cup in a blender)  
*Add optional spices and flavorings to suit your taste*  
½ cup raisins  
½ cup sugar or ½ cup brown sugar  
1½ T. cinnamon  
1 cup wheat germ  
1 cup dried fruit, cut into chunks  
1 cup powdered milk or flavored creamer

Mix all ingredients together. Put ¾ cup into small plastic bags or containers. To serve: Pour contents of packet into cup or bowl and add 1 cup boiling water. Let stand 2 minutes. Makes 8 packets.

# EFB FOUND IN LANE AND LINN COUNTIES

The notorious Eastern Filbert Blight (EFB) has finally raised its nasty head in commercial orchards in Linn and Lane Counties. During the weeks of July 3 and July 8, two confirmations were made by Jay Pscheidt, OSU/Botany and Plant Pathology, that EFB had infected the orchards. Inspections of these orchards have found severe infestations. To further our effort in controlling the spread of EFB, the following two days of touring have been scheduled.

Linn County - Wednesday, August 20, 6-7:30 p.m., Dever-Conner Orchard, 38888 Conser Rd., north of Albany. At 7:30 p.m. view new nut varieties.

Lane County - Thursday, August 21, 6-7:30 p.m., at a southern valley orchard, 33632 McKenzie View Dr., south of Coburg.

**All media personnel contact one of the following people concerning this event: Ross Penhallegon, Horticulture Agent, (682-4243), Garry Rodakowski, Oregon Hazelnut Commission (896-3187), or Phil Evonuk, Nut Growers Society (998-1848).**

Please **RSVP** so we can plan appropriately. Call 541-682-4243 or 800-872-8980 if out of the Eugene/Springfield calling area.

What does this mean? It means that, even though the south valley has been very vigilant in looking for EFB, in both cases the disease has been in the orchards for at least five years.

How did it get here or make such big jumps? We don't know.

The two field days will look specifically at what EFB looks like in the early stages, the latest information on controls, schedules of sprays and costs, and color photographs of EFB at different stages of growth will be provided. You will see how extensive damage can be in just a few years. Seeing the disease is one of the most effective ways of understanding its true impact. It is important to have a representative from each hazelnut farm in attendance.

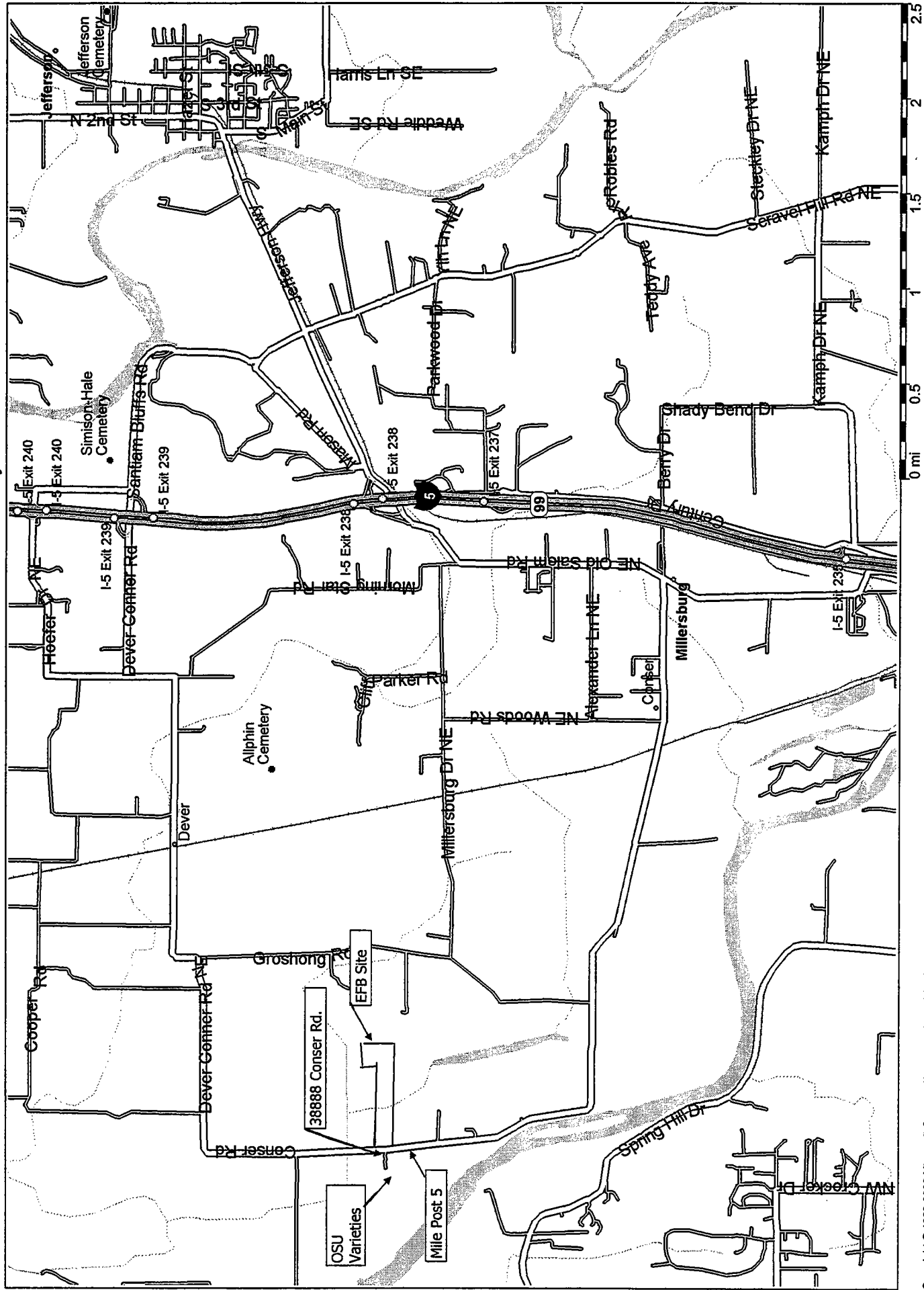
Another key to this situation is the critical need for ALL Ennis orchards to be thoroughly inspected NOW, and then again this winter. If EFB has been found in two orchards, how many more may have it? Hopefully none, but we won't know until they are inspected.

**Maps** are available for each tour. Call 682-4243 or 800-872-8980 if out of the local Eugene/Springfield calling area.

We will endeavor to provide public accessibility to services, programs, and activities for people with disabilities. If accommodation is needed to participate at any meeting, please contact the ADA Coordinator at the Lane County office of OSU Extension Service at 682-4243 or 1-800-872-8980 at least two-weeks prior to the scheduled meeting time.

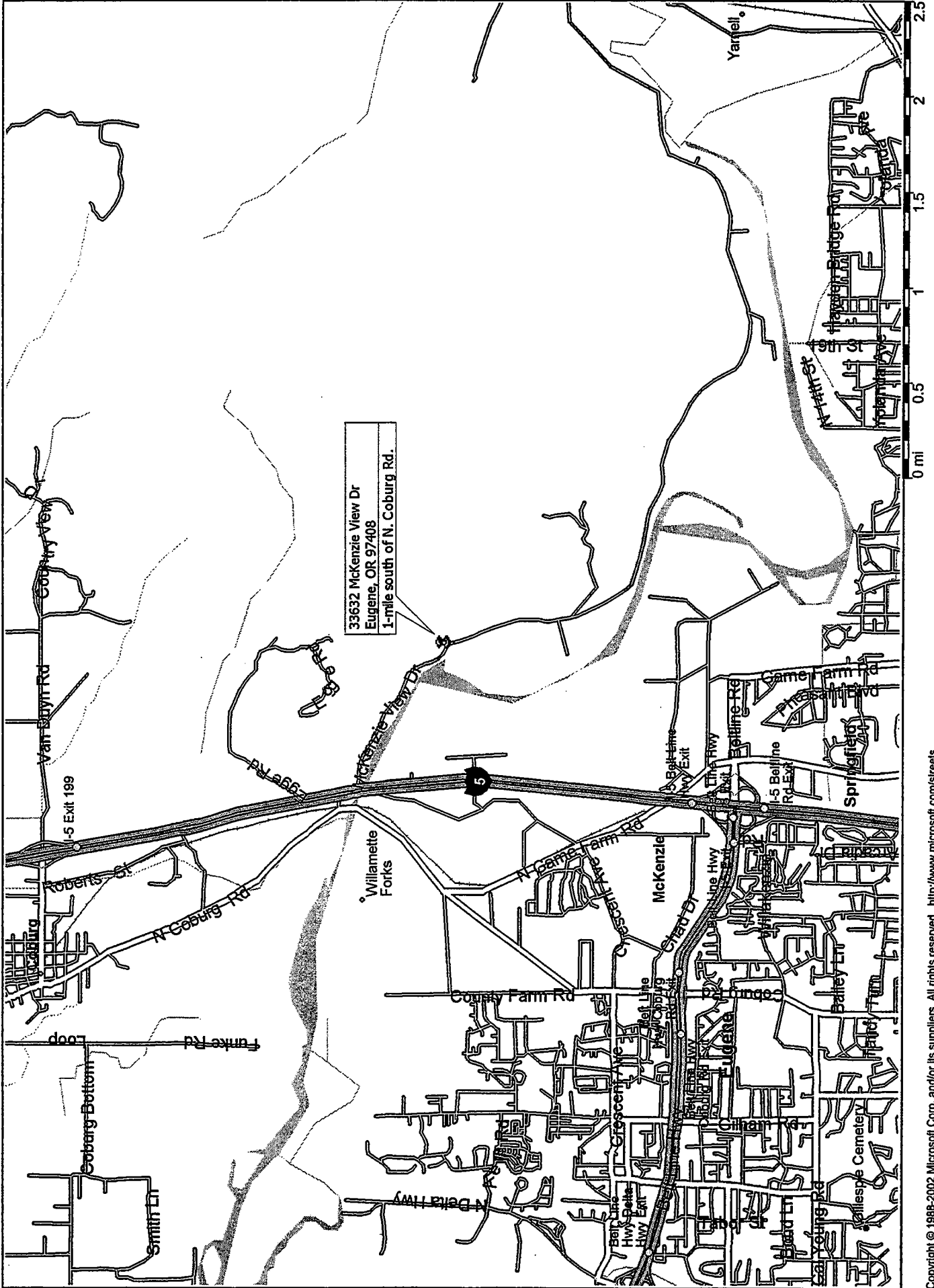
Oregon State University Extension Service offers educational programs, activities, and materials—without discrimination based on race, color, religion, sex, sexual orientation, national origin, age, marital status—as required by Title VI of the Civil Rights Act of 1964, Title IX of the Education Amendments of 1972, and Section 504 of the Rehabilitation Act of 1973. Oregon State University Extension Service is an Equal

# Dever-Conner Orchard ~ Linn County Tour



Copyright © 1998-2002 Microsoft Corp. and/or its suppliers. All rights reserved. <http://www.microsoft.com/streets>  
© Copyright 2001 by Geographic Data Technology, Inc. All rights reserved. © 2001 Navigation Technologies. All rights reserved. This data includes information taken with permission from Canadian authorities © Her Majesty the Queen in Right of Canada.

# Southern Valley Orchard - Lane County Tour



33632 McKenzie View Dr  
Eugene, OR 97408  
1-mile south of N. Coburg Rd.



# HORTICULTURE NEWS

**SPECIAL July 2003 EDITION**

**OSU/Lane County Extension Service**

**950 West 13th Avenue**

**Eugene, OR 97402-3913**

**682-4243 or 800-872-8980**



**Ross Penhallegon**

**OSU/Tri-County Extension Horticulture Faculty**

## CALENDAR OF UPCOMING EVENTS

- August 6            Nutgrowers Summer Tour (Hazelnut Tour: Yamhill, Marion, Clackamas Counties)  
August 20          Linn County Inspection Day  
August 21          Lane County Inspection Day  
August 21-24      Farwest Nursery Show, Portland

## EFB FOUND IN LANE AND LINN COUNTIES

The notorious Eastern Filbert Blight (EFB) has finally raised its nasty head in commercial orchards in Linn and Lane Counties. During the weeks of July 3 and July 8, two confirmations were made by Jay Pscheidt, OSU/Botany and Plant Pathology, that EFB had infected the orchards. Inspections of these orchards have found severe infestations. To further our effort in controlling the spread of EFB, two days of touring have been scheduled.

Linn County - Wednesday, August 20, 6-7:30 p.m. Dever-Conner Orchard, 3888 Conser Rd., north of Albany. At 7:30 p.m. view new nut varieties.

Lane County - Thursday, August 21, 6-7:30 p.m. at a southern valley orchard, 33632 McKenzie View Dr., south of Coburg.

**All media personnel contact one of the following people concerning this event:  
Ross Penhallegon, Horticulture Agent, (682-4243), Garry Rodakowski, Oregon  
Hazelnut Commission (896-3187), or Phil Evonuk, Nut Growers Society (998-1848).**

Please **RSVP** so we can plan appropriately. To RSVP and to get a map call 541-682-4243 or 800-872-8980 if out of the Eugene/Springfield calling area.

What does this mean? It means that, even though the south valley has been very vigilant in looking for EFB, in both cases the disease has been in the orchards for at least five years.

How did it get here or make such big jumps? We don't know.

What should we do now? There will be discussions at the Wednesday, August 6, Nut Grower Society summer tour detailed in *The Northwest Nutgrower* summer newsletter (call 503-678-6823 with questions). Two more informational days are planned for Linn and Lane counties (see box above).

The field days will look specifically at what EFB looks like in the early stages, the latest information on controls, schedules of sprays and costs, and color photographs of EFB at different stages of growth will be provided. You will see how extensive damage can be in just a few years. Seeing the disease is one of the most effective ways of understanding its true impact. It is important to have a representative from each hazelnut farm in attendance.

Another key to this situation is the critical need for ALL Ennis orchards to be thoroughly inspected NOW, and then again this winter. If EFB has been found in two orchards, how many more may have it? Hopefully none, but we won't know until they are inspected.

Maps are available for each tour. Call 682-4243 or 800-872-8980 if out of the local Eugene/Springfield calling area.

### **OREGON STATE UNIVERSITY EFB WEB SITE**

Oregon State University maintains a web site concerning the detection and eradication of Eastern Filbert Blight (EFB). Information on fungicides, canker removal, resistant cultivars, burning, etc. is available here. The web address is <http://oregonstate.edu/dept/botany/epp/EFB/>

We have put together a one page EFB identification guide for those of you who do not have web access. Call the Extension office to have this flyer sent to you.

### **OREGON HAZELNUT SUMMER TOUR**

The Hazelnut summer tour will be August 6. The tour will start at 8:30 a.m. in Silverton at the Verl Holden Orchard. This stop will include Verl discussing his orchard of 'Lewis' grafted on to suckerless rootstock and a talk on in-line drip irrigation. The second stop will be at the Verl Holden nursery where Verl will talk about tissue culture and Rich Birkmeier will talk about micro propagated trees. At 11:30 a.m., growers will be on their own for lunch in the Woodburn area.

Stop three will be at the Scott Burlington orchard in St. Paul. Talks will be by John Brentano on EFB control, replacing pollenizers plus Jay Pscheidt will discuss EFB chemical controls. The fourth stop will be at Dick and Eileen Buyserie's orchard in St. Paul, looking at the 'Lewis' orchard and nine-year old 'Ennis' orchard with EFB. Don Monte will talk about appraising an orchard and Jeff Olsen will discuss big bud mite.

The famous Oregon Hazelnut Commission barbecue will at Champeog State Heritage Area north of Salem.

### **OREGON PEST ALERT WEB SITE**

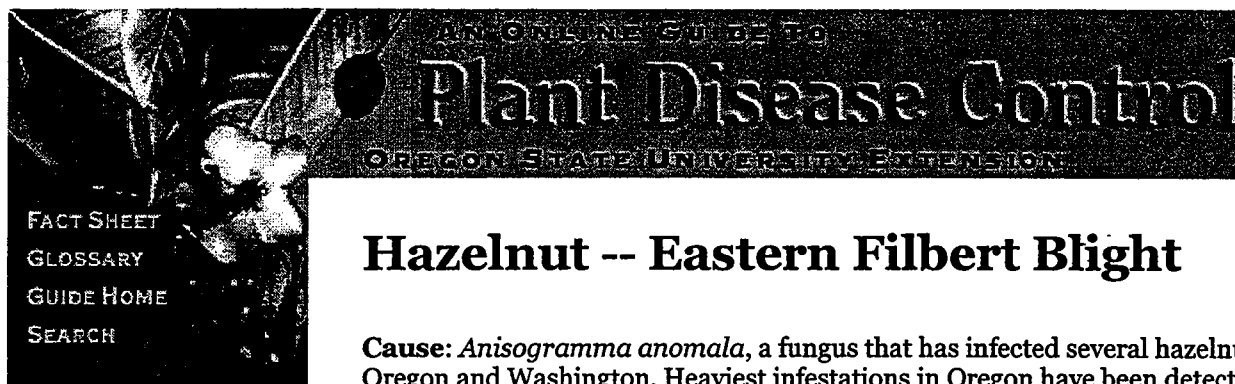
There is a great new site located on the OSU Web Site: <http://ippc.orst.edu/pestalet/>

Current insect and disease information will be listed on this site. After registering, growers that find different insects and diseases and can report on what is happening in their area. Take a look, you will be pleased. There is a lot of great information on this Web Site including many web links.

W://Efb/Hort News 07 03

We will endeavor to provide public accessibility to services, programs, and activities for people with disabilities. If accommodation is needed to participate at any meeting, please contact the ADA Coordinator at the Lane County office of OSU Extension Service at 682-4243 or 1-800-872-8980 at least two-weeks prior to the scheduled meeting time.

Oregon State University Extension Service offers educational programs, activities, and materials—without discrimination based on race, color, religion, sex, sexual orientation, national origin, age, marital status—as required by Title VI of the Civil Rights Act of 1964, Title IX of the Education Amendments of 1972, and Section 504 of the Rehabilitation Act of 1973. Oregon State University Extension Service is an Equal Opportunity Employer.



## Hazelnut -- Eastern Filbert Blight

**Cause:** *Anisogramma anomala*, a fungus that has infected several hazelnut orchards in Oregon and Washington. Heaviest infestations in Oregon have been detected in Washington and Clackamas counties. Infected orchards also have been discovered as far west and east of Portland as hazelnuts are grown. The disease has been slowly moving south and is now as far as Keizer, OR. It has also been found as far north as British Columbia.

The fungus has a life cycle of 2 or more years including a 12- to 15-month latent period when no symptoms are visible. In spring, spores are released in a sticky, white ooze in wet weather. Wind-driven rain and splashing droplets spread spores to young, developing shoots. Infection occurs in wet weather from budbreak through shoot elongation. Spores penetrate immature epidermal cells in the region behind the meristem where cell elongation occurs. Neither wounds nor natural openings on hazelnut trees have been shown to serve as sites of entry for the fungus, and it is not spread through the nuts.

Stroma begin to develop the second summer after infection. Ascospores begin to mature in fall as the rainy season begins. Several hours of continuous rain are needed for ascospore release. Stroma will continue to sporulate, even after the diseased branch is removed from the tree, until the canker dries out completely. Ascospores are shed all winter but cannot infect hazelnuts until spring. Heavy rains during the dormant period have been associated with reduced spore catches in spring. New stroma develop each year as the canker continues to expand around and along the branch. Numerous new infections also occur each succeeding year.

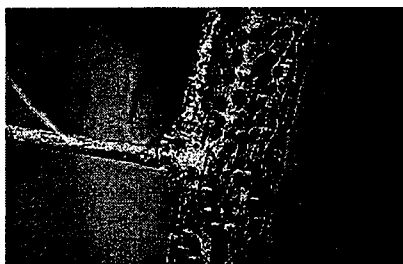
The pollinizer 'Daviana' and the cultivars 'Ennis' and 'Du Chilly' are highly susceptible to this disease. Most wild or escaped seedlings also are susceptible because they may have 'Daviana' as a parent. 'Casina' is susceptible as is 'Negret'. The main industry cultivar 'Barcelona', 'Butler', 'Hall's Giant', and 'Willamette' have intermediate susceptibility. 'Lewis' and 'Clark' are resistant but can become infected through repeated exposure to EFB. Contorted ornamental hazelnuts can also be infected and have been found in Pendleton, Portland, Corvallis, and Eugene. The native *Corylus conuta* var. *californica* and *C. conuta* var. *conuta* and the turkish hazel (*C. colurna*) do not appear susceptible to the disease.

**Symptoms:** Infected branches may die suddenly from July to September. Dead leaves may stay on the branch. Elongated, raised bumps begin to form on infected twigs and branches in June. When the bark is removed, the cambium below the bumps is chocolate brown. Bumps continue to expand until the fungus breaks through the outer bark in July and August. A white, oval to football-shaped fungal structure called a stroma can be seen then. As the stroma matures from August to October, it turns black and raises about 0.12 inch above the branch. Stromata occur in relatively straight rows lengthwise along the branch. Cankers enlarge along the branch each year, from a few inches on small branches up to 3 ft on larger branches of susceptible trees. Branches die back when expanding cankers girdle branches and limbs.

Most of the canopy of susceptible trees is usually dead within 7 to 15 years after the first infection (if diseased limbs are not removed). Suckers, however, may be produced for many years. Orchards decline in vigor and health but may continue to be productive. Tree productivity declines slowly at first but then sharply after 3 to 10 years depending on the cultivar. At some point the orchard becomes economically unproductive as the more susceptible pollinizers or main cultivars die out, resulting in poor nut set.



The disease may be confused with *Eutypella cerviculata*, which produces smaller black fruiting bodies on dead branches. This fungus produces diagnostic black rings under the bark, which can be found using a pocket knife. Cicada egg-laying scars can also look somewhat like eastern filbert blight but are not black and look stitched.



Note black stroma within sunken canker.



Eastern filbert blight is also a disease on the ornamental contorted filbert.

**Cultural control:** An integrated approach using several cultural and chemical techniques is needed for adequate disease control. Scouting for cankers is very useful; early detection aids overall control.

1. Replace susceptible pollinizers with immune ones such as the VR series, Gamma (compatible with Barcelona), Delta, Epsilon, or Zeta. Also, reduce the number of susceptible pollinizers to 4 or 5% of the trees in the orchard.
2. Remove or destroy escaped seedlings and trees beyond the orchard perimeter.
3. Remove infected branches 1 to 3 ft below cankered areas, and burn or bury before budbreak in spring. Remove severely infected trees.
4. Start sucker control early in the season.
5. In the southern Willamette Valley of Oregon, inspect orchards once in late summer and again in the dormant season.

**Chemical control:** Three to four applications may be needed to adequately protect trees. Apply starting at budswell to budbreak and continue at 2-week intervals until early May. Thorough coverage of all branches is essential. Spray each row; however, for the first application only, alternate row applications may provide acceptable coverage. The disease kills trees slowly, so yield benefits from fungicidal protection are not realized for 3 to 4 years after application.

1. Abound at 11 to 12.3 fl oz/A. Use as a protectant only on a 10 day schedule. Do not use within 45 days of harvest or more than 2.3 qt/A/season. 4-hr reentry.
2. Bravo Weather Stik at 4 pints/A (Bravo Ultrex is also registered). Do not use within 120 days of harvest. May increase low-vigor trees' susceptibility to summer sunburn. Excellent control. 12-hr reentry.
3. Copper products provide good control. Some labels incorrectly recommend October applications which are ineffective against the fungus.
  - a. Bordeaux 6-6-100. **Caution** Spray may burn young foliage.
  - b. Champion at 16 to 24 lb/A with 1 pint superior-type oil/100 gal water. Flowable formulations have not performed as well as wettable powders. 24-hr reentry.
  - c. C-O-C-S WDG at 12 to 16 lb/A plus 1 pint superior-type oil/100 gal water. 24-hr reentry.
  - d. Copper-Count-N at 10 to 12 qt/A. 12-hr reentry.
  - e. Cuprofix Dispers at 20 to 30 lb/A. 24-hr reentry.
  - f. Kocide DF at 16 to 24 lb/A plus 1 pint superior-type oil/100 gal water. 24-hr reentry.
  - g. Nordox at 12 to 20 lb/A. 24-hr reentry.
  - h. Nu-Cop 50DF at 16 to 24 lb/A with 1 pint superior-type oil/100 gal water. 24-hr reentry.
4. Echo 720 at 4 pints/A. Do not use within 120 days of harvest. May increase low-vigor trees' susceptibility to summer sunburn. Excellent control. 12-hr reentry.

5. Flint at 2 to 4 oz/A. do not use more than 4 applications, 16 oz/A/season, or within 60 days of harvest. Excellent protection activity. Possible 2 day kickback activity (based on 1 experiment). 12-hr reentry.
6. Messenger at 6.7 to 13.4 oz/A. Although this product (a bacterial protein) is labeled for hazelnut, it is of unknown efficacy against EFB. Do not use with chlorinated water or at a pH below 5.0. Use within 4 hours of mixing. 4-hr reentry.

**For non-bearing trees only.** Non-bearing is defined as trees that will not produce a harvestable crop within 12 months after the last application.

1. Orbit at 5 to 8 fl oz/A. Do not apply more than 32 fl oz/A/season. Applications may result in smaller, thicker, greener leaves and shortened internodes but trees will grow out of it within 2 weeks of the last application. Has eradicator activity if applied within 72 hr of infection. Excellent control. **Oregon only.** SLN OR-000012. 24-hr reentry.
2. Rubigan EC at 4 to 8 fl oz/A. Not to be used on non-bearing trees interplanted in bearing orchards. Good control. **Oregon only.** SLN OR-000018. 12-hr reentry.

**Notes:** Other chemical(s) may be available under temporary, emergency use (section 18) or state crisis exemption labels. Double check with your local extension agent or chemical supplier. Although OxiDate is registered it will not control this disease due to its short residual activity.

**References:**

Johnson, K.B., S.A. Mehlenbacher, J.K. Stone, J.W. Pscheidt, and J.N. Pinkerton. 1996. Eastern filbert blight of European hazelnut: It's becoming a manageable disease. *Plant Disease* 80:1308-1316.

Pscheidt, J. W. 2002. Eastern Filbert Blight Help Page.  
<http://oregonstate.edu/dept/botany/epp/EFB/>

**Content edited by:** Jay W. Pscheidt on February 13, 2003

[Top](#)

In print since 1954 and on the web since 1996. [Questions or comments, please contact us.](#)

**OSU/Lane County**  
**Extension Service**  
950 West 13th Avenue  
Eugene, OR 97402-3913

PRSRT STD  
US POSTAGE  
PAID  
EUGENE, OR  
PERMIT NO. 426

### **Caneberry Field Day Notes**

I attended the Caneberry Day Tour, July 9, at the North Willamette Research and Extension Center. The following articles were handed out. Call (541) 682-4243 or (800) 872-8980 if out of the local Eugene/Springfield if you would like a copy of any of these articles.

*Red raspberry cultivars and selections developed at the Pacific Agriculture Research Centre, Agassiz, B.C., 1 pg.*

*New Early, Fresh Market Blackberries, 9 pgs.*

*Nitrogen Fertilization of Berry Crops (red raspberry, blackberry, strawberry), 4 pg.*

*What we've learned about 'Marion' blackberry to date, 2 pgs.*



**Do you want to learn ways to eat better  
and spend less money? Try EFNEP!**

### **What is EFNEP?**

The Expanded Food and Nutrition Education Program helps families living on limited incomes.

It helps families get information and develop skills they may need to improve their diets. EFNEP is for parents, teenagers and children.

### **What does EFNEP offer me?**

Nutrition assistants are members of the Oregon State University Extension staff. They know from personal experience the problems of raising a family without enough money. They visit you in your home or meet with groups to talk about concerns such as:

- Eating for good health
- Making food dollars last all month
- Planning quick meals
- Learning to prepare tasty, thrifty meals
- Shopping for the best food buy
- Keeping food safe to eat
- Growing and preserving food

These nutrition education programs are available in Eugene, Springfield, Junction City, Veneta, Cottage Grove, Creswell and Florence.

### **How can I learn more about EFNEP?**

For more information about EFNEP or to enroll for the classes call:

**Free!**  
to eligible families

Lane County Extension Service  
950 W. 13th Avenue  
Eugene, OR 97402  
(541) 682-4281  
1-800-872-8980



# BECOMING A PARTICIPANT IN THE EFNEP PROGRAM

## What you will receive:



- Calendar
- Notebook
- "Welcome to the Program" letter
- Computer diet analysis
- Recipes
- Nutrition information and cooking experiences
- A certificate from Oregon State University Extension Service for completing the nutrition program

## What the Nutrition Assistant does:

- Provides nutrition and hands-on cooking lessons based on your family's needs
- Plans recipes to fit your budget and what your family likes
- Notifies you if a lesson must be cancelled

## What you are asked to do:

- Be home for lessons or call 682-4281 to cancel
- Be prepared for the lesson
- Complete an enrollment form
- Complete two to three diet recalls and surveys
- Have fun!



## Possible Topics:

Food Guide Pyramid  
Low Cost Meals  
Smart Food Shopping  
Meal Planning  
Breads, Cereal, Rice and Pasta  
Calcium Rich Foods  
Protein Rich Foods  
Low Fat Meals and Snacks

Vegetable Protein  
Fruit  
Vegetables  
Food Safety  
Feeding Your Baby  
Feeding Young Children  
Herbs and Spices (Flavor Alternatives to Fat/Salt)

Approved 12-2001



**OREGON STATE UNIVERSITY**  
**EXTENSION SERVICE**